

HYBRID COMBI

STEAM & INFRARED IN ONE CABIN!



➤ **Tailored-made ambiance :** Create the perfect atmosphere with LED chromotherapy, adjustable to suit your desires.

➤ **Exceptional materials and comfort :**
A spruce structure with a red cedar finish, combining strength and elegance, paired with Ergonomic bench seats and abachi headrests for absolute relaxation.

➤ **Dual technology :** Combine the benefits of a traditional steam sauna and an infrared cabin (Dual Healthy) for a complete and personalized sauna experience.

➤ **Integrated audio system :** An intuitive digital control panel paired with an integrated audio system (Bluetooth, MP3, and FM reception) for a customized experience.

WARRANTIES

ELECTRONICS **2 YEARS**

WOOD PANELING **10 YEARS**



2 VERSIONS
2 & 4 seats



HYBRID
technology



INFRARED
FULL SPECTRUM
Quartz + magnesium

THE BEST OF BOTH WORLDS

Struggling to choose between the joys of a traditional sauna or the benefits of infrared waves?

The Hybrid Combi revolutionizes the sauna experience by allowing you to enjoy both steam and infrared sessions in a single cabin.

Steam technology : It generates intense, invigorating dry heat, perfect for a deep purification ritual, stimulating detoxification, the cardiovascular system, and the respiratory tract. A traditional session where the crackling of water on the stones and the scent of essential oils calm both the body and mind.

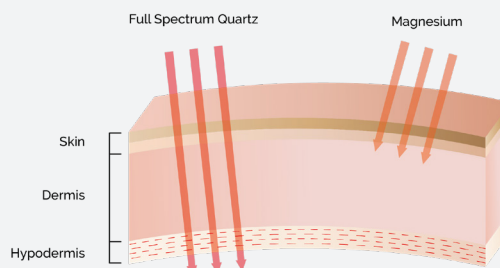
Infrared technology, on the other hand, uses Quartz + Magnesium emitters that provide penetrating radiation, enabling fast and targeted heating of muscles and tissues in depth, all with much gentler heat (maximum 60°C).

Full Spectrum Technology : Infrared rays using Quartz lamps (with a high proportion of IR-A and B) penetrate deeply to relieve pain and promote muscle recovery. Their quick start-up makes it easy to have very regular sessions.

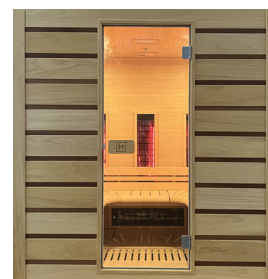
Magnesium Technology : Emitting medium waves (IR-B and IR-C), it creates both penetrating and even heat. It boosts sweating and stimulates blood circulation, all in optimum comfort.

This combination of dry heat and infrared radiation ensures complementary and varied benefits, from improved sleep and reduced anxiety to muscle relaxation and pain relief.

Sauna use is made easier with either short and invigorating sessions (infrared) or long, highly relaxing, and regenerating sessions (steam).



TECHNICAL CHARACTERISTICS



References	HL-HC02PK	HL-HC04PK
Version	2 seats	4 seats
Dimensions	140 x 130 x 190 cm	180 x 140 x 190 cm
Advanced technology	4 Quartz + Magnesium emitters + 1 carbon panel of 100W	8 Quartz + Magnesium emitters + 1 carbon panel of 100W
Total power	2200W	2800W
Materials	Spruce & red cedar finish	
Included options	LED chromotherapy / FM Audio / MP3 / Bluetooth / Safety glass door	
Stove	3.5 kW + stones	4.5 kW + stones
Warranty	2 years: electronics 10 years: wood paneling	